
Golden Valley Unified School District



State of the District

September 2011

Presented by

Superintendent Andy Alvarado



Vision

Golden Valley Unified School District is committed to creating and maintaining an innovative learning community based in excellence.

Mission

The mission of Golden Valley Unified School District is to provide our students the means to achieve to their highest potential within a caring, secure environment.

Beliefs

- Our students can be successful, self-directed, lifelong learners.
 - Character education develops self-control, a sense of purpose, and positive leadership skills.
 - Effective education requires devoted, highly qualified teachers and staff.
 - Education is a partnership between the school, family, students, and the community.
 - We celebrate our diversity and value our differences.
 - Technology supports and enhances the learning experience.
 - We hold ourselves accountable to achieve high standards.
-



Board of Trustees

Mr. Mark Toole, Board President

Mr. Mike Kelly, Board Clerk

Mrs. Mona Diaz

Mrs. Kathleen Crumpton

Mr. Brian Freeman

Superintendent

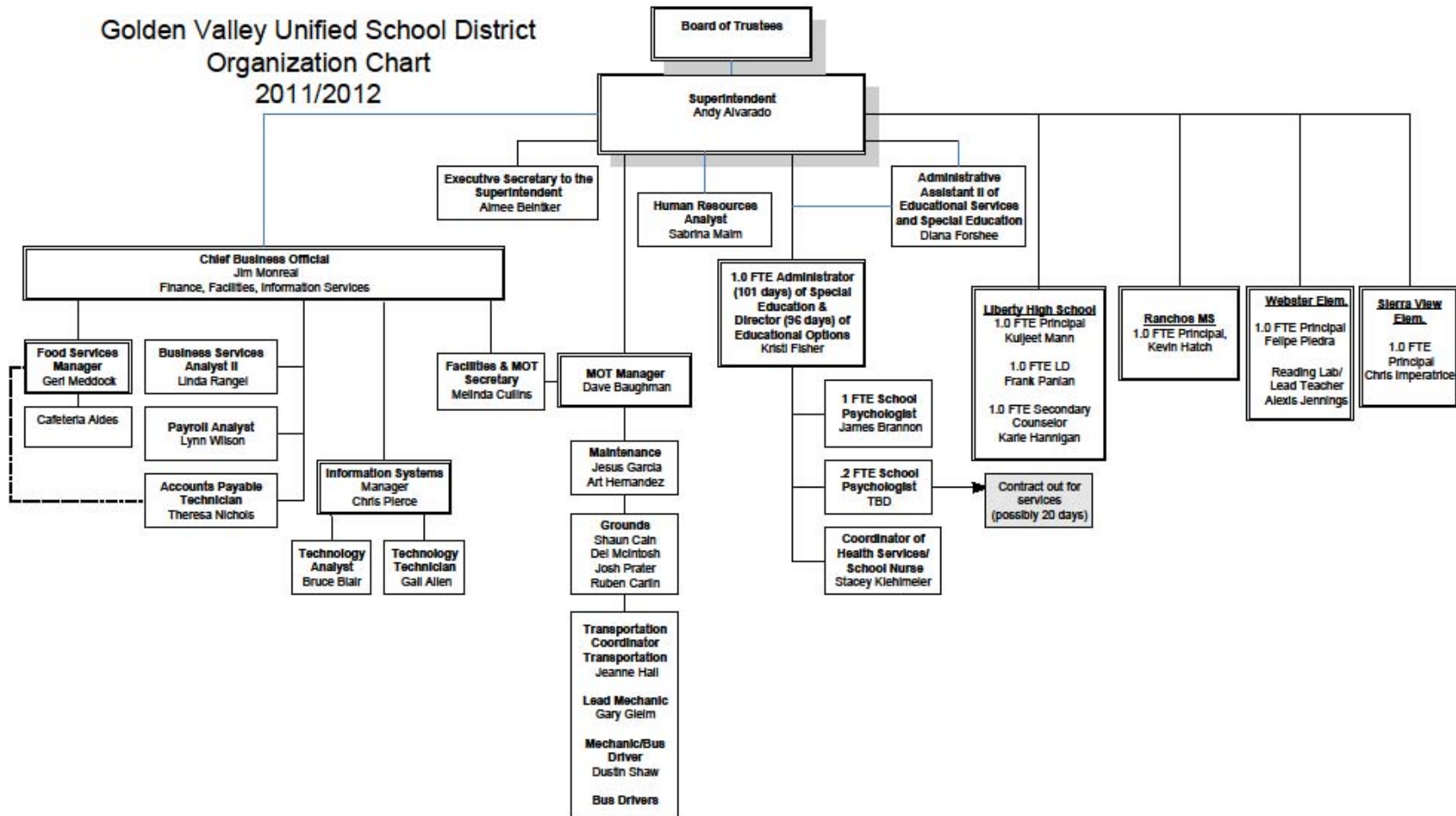
Mr. Andy Alvarado

Cabinet

Mr. Jim Monreal, Chief Business Official

Organizational Chart - 2011/2012

(The right people on the bus – Jim Collins – “Good to Great”)

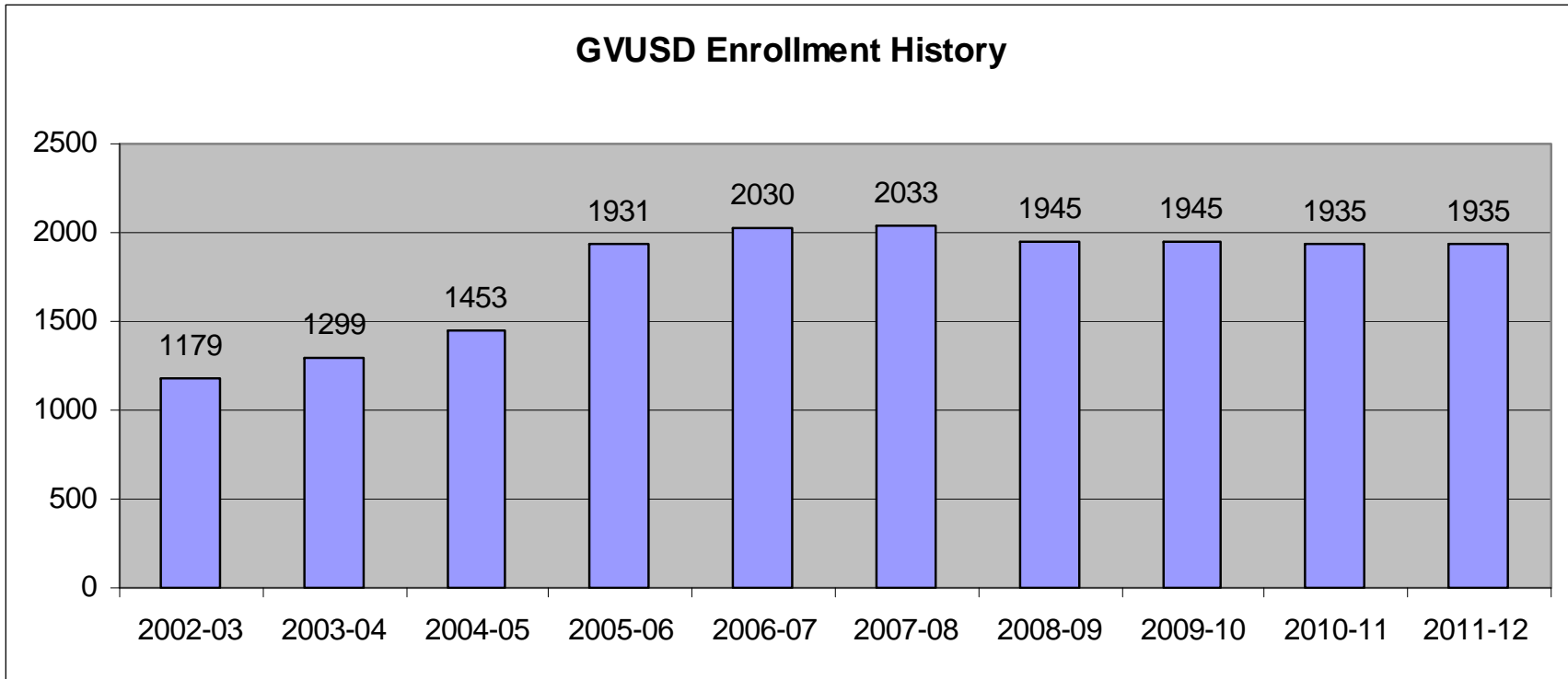


Demographics

Summary	2009/2010	2010/2011
Free/Reduced School Lunch	34.1%	39.7%
Socioeconomic Disadvantaged	30.9%	35.5%
English Language Learners	5.1%	6%
Students with Disabilities	7.3%	8%

Ethnic Breakdown	2009/2010	2010/2011
Hispanic	30%	29.7%
White	60.4%	52.2%
African American	1.7%	1.4%
Asian	1.9%	2.2%
Filipino	.4%	.4%
American Indian	1.4%	.8%
Pacific Islander	.2%	.3%
Declined to state	3.8%	13.2%

Enrollment

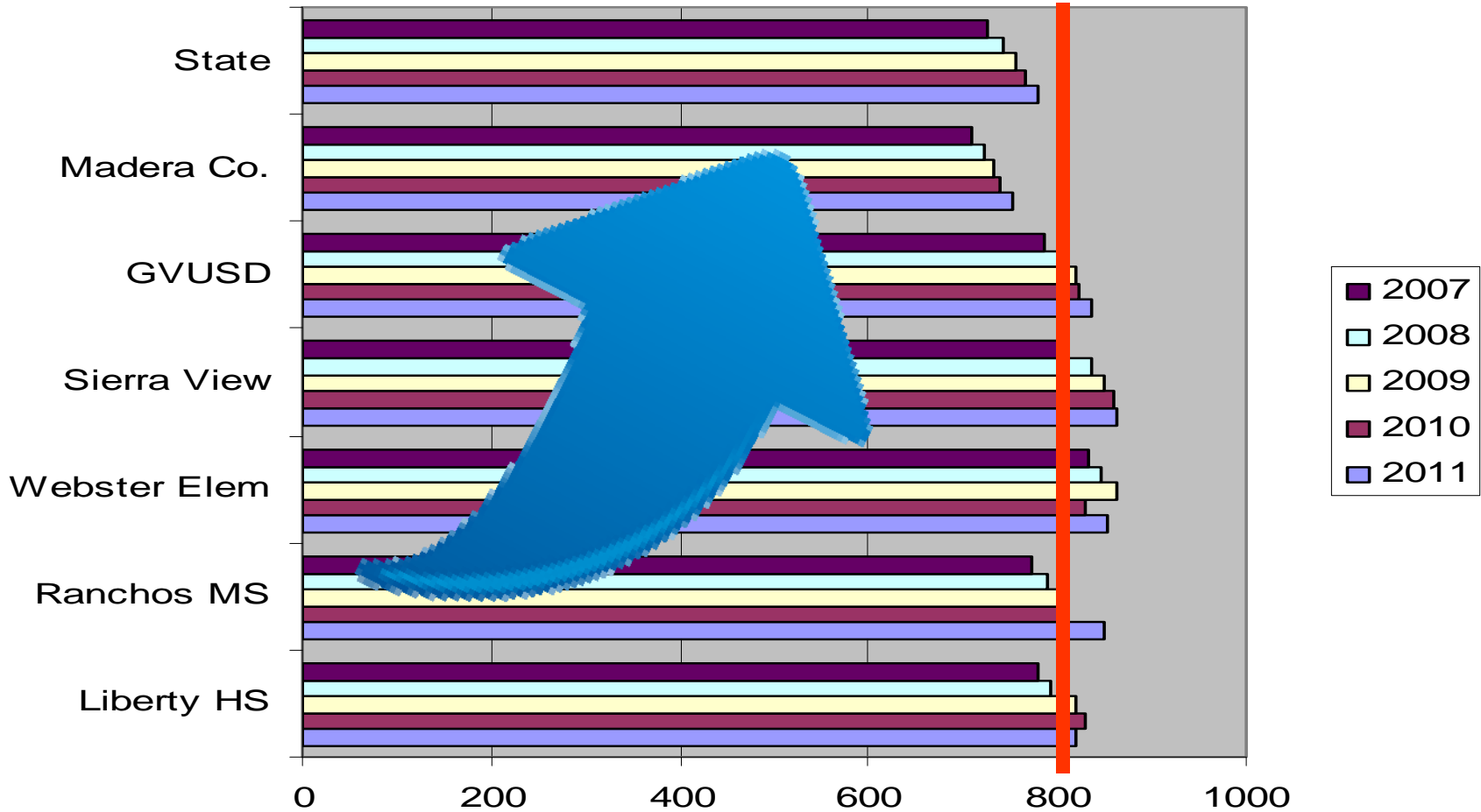


2003-04	2004-05	2005-06	2006-07	2007-08	2008-09	2009-10	2010-11	2011-12
1299	1453	1931	2030	2033	1945	1945	1935	1935

Golden Valley USD API

	API				Met Growth Target		
	<u>2011 Growth</u>	<u>2010 Base</u>	<u>2010-11 Growth Target</u>	<u>2010-11 Growth</u>	<u>School-wide</u>	<u>All Subgroups</u>	<u>Both Schoolwide and Subgroups</u>
<u>GOLDEN VALLEY UNIFIED</u>	835	822	D	13			
Elementary Schools							
<u>Sierra View Elementary</u>	862	860	A	2	Yes	Yes	Yes
<u>Webster Elementary</u>	852	830	A	22	Yes	Yes	Yes
Middle Schools							
<u>Ranchos Middle</u>	850	811	A	39	Yes	Yes	Yes
High Schools							
<u>Centennial Independent Study</u>							
<u>Liberty High</u>	821	828	A	-7	Yes	Yes	Yes
ASAM Schools							
<u>Independence Continuation High</u>							
<u>Lincoln Community Day</u>							
<u>Valley Teen Ranch Community Day</u>							

Academic Performance Index (API) Growth 2007-2011



GVUSD is the HIGHEST Performing District in Madera County and every comprehensive school is a California Distinguished School

2011 STAR Results

■ WES

- ELA proficiency up from 56% in 09-10 to 62% in 10-11.
- Math proficiency up from 68% in 09-10 to 72% in 10-11.
- 4th grade at Webster had 77% of students proficient in ELA and 86% proficient in Math
- 6th grade ELA proficiency levels increased from 54% in 09-10 to 72% in 10-11. Math increased from 66% in 09-10 to 76% in 10-11
- Laura Fox had an amazing success rate with 93% of her students proficient or advanced in Math!
- Our goal for 11-12 is to once again be the highest performing school in the district

■ SVE

- All subgroups were met
 - School wide Proficiency or Advance rate for math 71.3%
 - School wide Proficiency or Advance rate for ELA 63.5%
 - 2nd Grade ELA 66% Math 77%
 - 5th Grade ELA 68% Math 78%
 - 6th Grade ELA 71% Math 71%
 - (5th/6th) ELA 97% Math 97% (one student not proficient)
-

2011 STAR Results

■ Ranchos Middle School

**RMS Percentage of students
proficient or advanced:**

	2010	2011	Increase
English	63.5%	69.1%	5.6
History	51.5%	64.3%	12.8
Math	50.2%	56.1%	5.9
Science	65.9%	81.6%	15.7

Growth in % proficient or Advanced for Hispanic and SED students was in the double digits in most areas.

■ Liberty High School

- 74% Proficient or Advance in ELA 10th Grade
- 79% Proficient or Advance in Life Science
- 82% Proficient or Advance in Biology
- 74% Proficient or Advance in World History
- 88% ELA 10th Grade Students Passed CAHSEE
- 94% Math 10th Grade Students Passed CAHSEE

Academic Yearly Progress Table

	<u>Met 2011 Criteria for:</u>					<u>PI Status</u>
	<u>All Components</u>	<u>English-Language Arts</u>	<u>Mathematics</u>	<u>API</u>	<u>Graduation Rate</u>	<u>PI Status</u>
<u>GOLDEN VALLEY UNIFIED</u>	No	No	No	Yes	No	Not In PI
Elementary Schools						
<u>Sierra View Elementary</u>	No	No	Yes	Yes	N/A	Not in PI
<u>Webster Elementary</u>	No	Yes	No	Yes	N/A	Not in PI
Middle Schools						
<u>Ranchos Middle</u>	Yes	Yes	Yes	Yes	N/A	Not in PI
High Schools						
<u>Centennial Independent Study</u>	Yes	Yes	Yes	N/A	N/A	Not Title 1
<u>Liberty High</u>	Yes	Yes	Yes	Yes	No	Not Title 1
<u>Lincoln Community Day</u>	Yes	Yes	Yes	N/A	N/A	Not in PI
ASAM Schools						
<u>Independence Continuation High</u>	Yes	Yes	Yes	N/A	N/A	Not in PI
<u>Valley Teen Ranch Community Day</u>	Yes	Yes	Yes	N/A	N/A	Not in PI

Curriculum

- GVUSD Essential and Enduring Standards have been identified in English Language Arts and Math.
 - Introduction of the Common Core
 - Monitoring standards-based instruction at all sites
 - Curriculum Maps for Middle School and High School revised (Goal for 2011-2012)
 - Math and ELA Pacing Guides for Elementary revised
 - ELA Adoption Committee will be established this Fall
-

Instruction

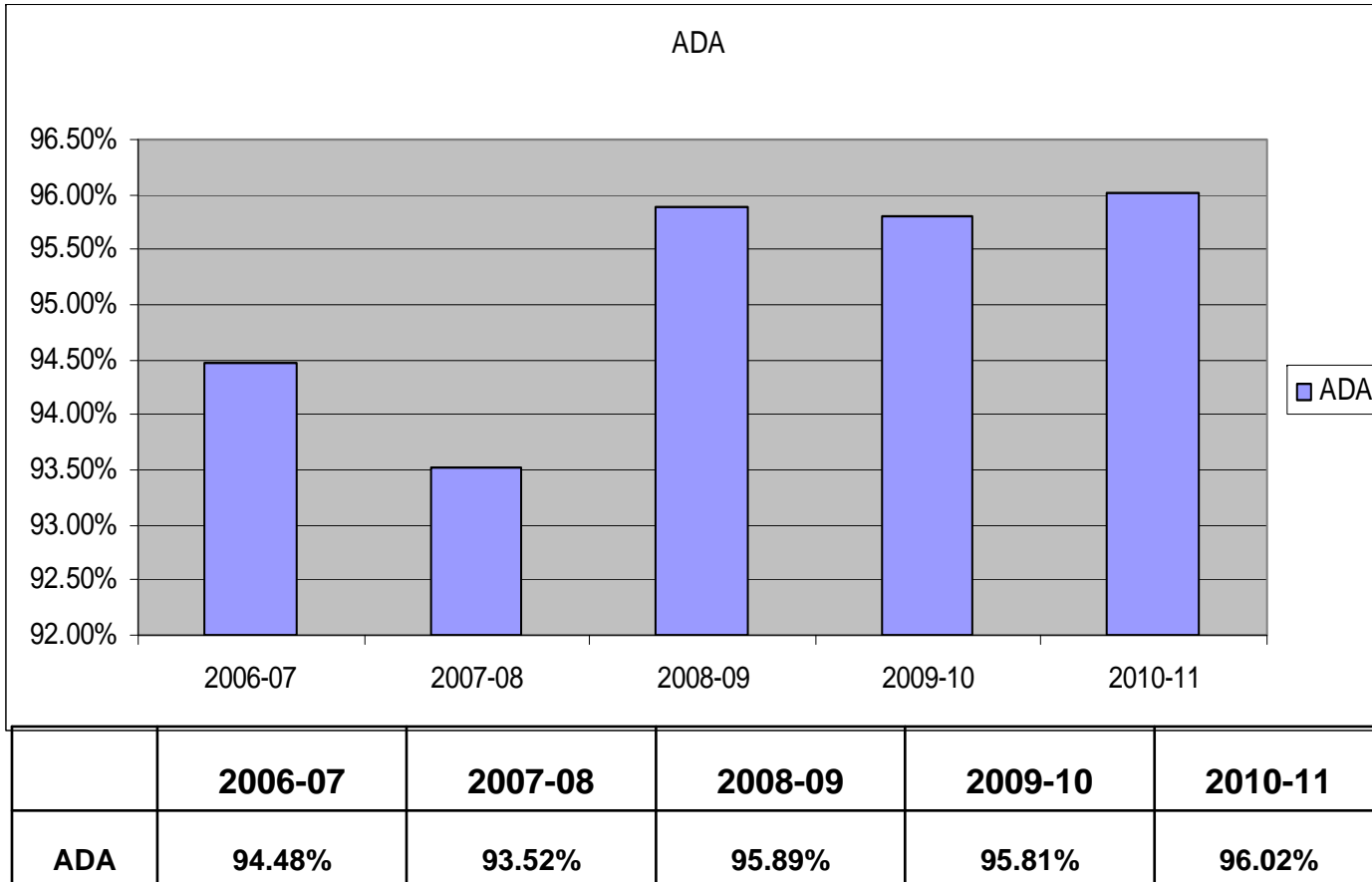
- *Rigor, Relevance and Relationships*
 - *Explicit Direct Instruction (EDI) will continue to be the focus*
 - Learning Objective
 - Activate Prior Knowledge
 - Concept Development
 - Lesson Importance
 - Skill Development
 - Guided Practice
 - Closure
 - Independent Practice
 - Periodic Reviews
 - *Walkthrough Observations as a **coaching tool***
 - Walkthrough tool
-

Assessment



- A district assessment program that provides invaluable data on the mastery of state standards on a 2-12 basis is disseminated regularly to administrators, departments, and teachers.
- District Benchmarks in English Language Arts and Math are currently established in grades 2-12 district wide (k-1 math)
- Benchmarks are administered every 6 weeks in grade 7-12 and quarterly in grades 2-6
- Blueprints have been developed in grades 2-12 using Intel-Assess
- Staff analyze results through Performance Matters data management system
- Staff collaborate in department/grade level teams and discuss the data and programmatic information that is newly available using the Cycle of Inquiry process
- Re-teach Re-assess using Quick Checks (K-8)

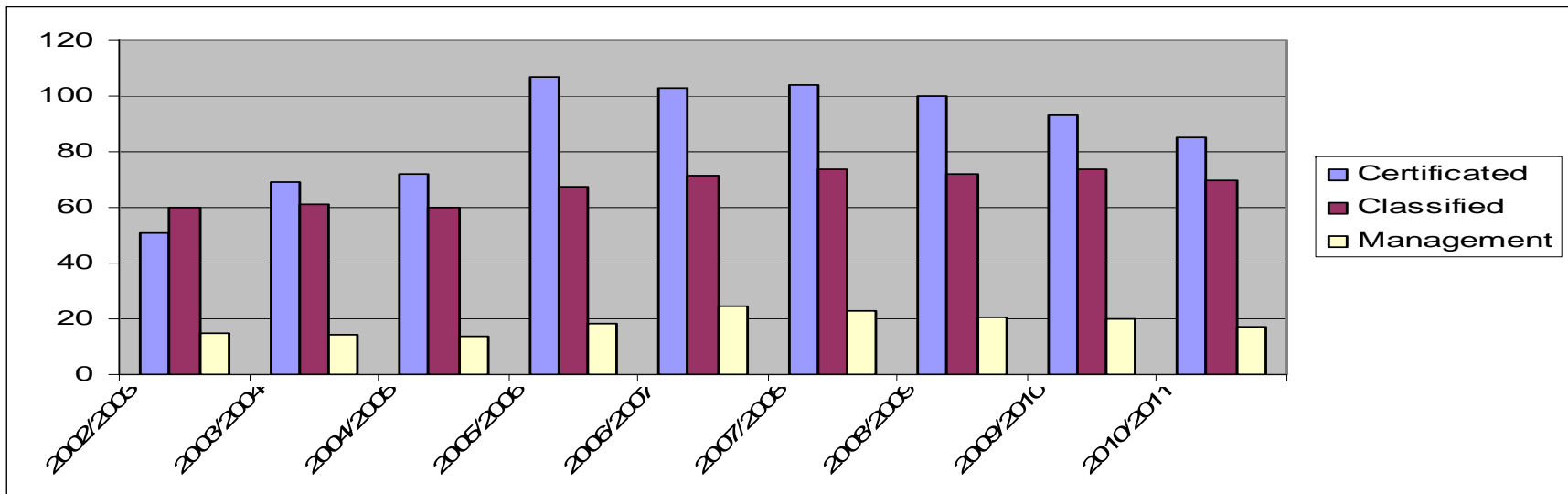
Count Me In Attendance Campaign



Vulcan Materials provided generous contributions to the GVUSD Count Me In Attendance Campaign with \$500.00 donations to each school site for both semesters for a total contribution of \$5,000.00.

A 1% increase to the Attendance Rate for 2011/2012 would equate to a \$113,000.00 increase to the General Fund.

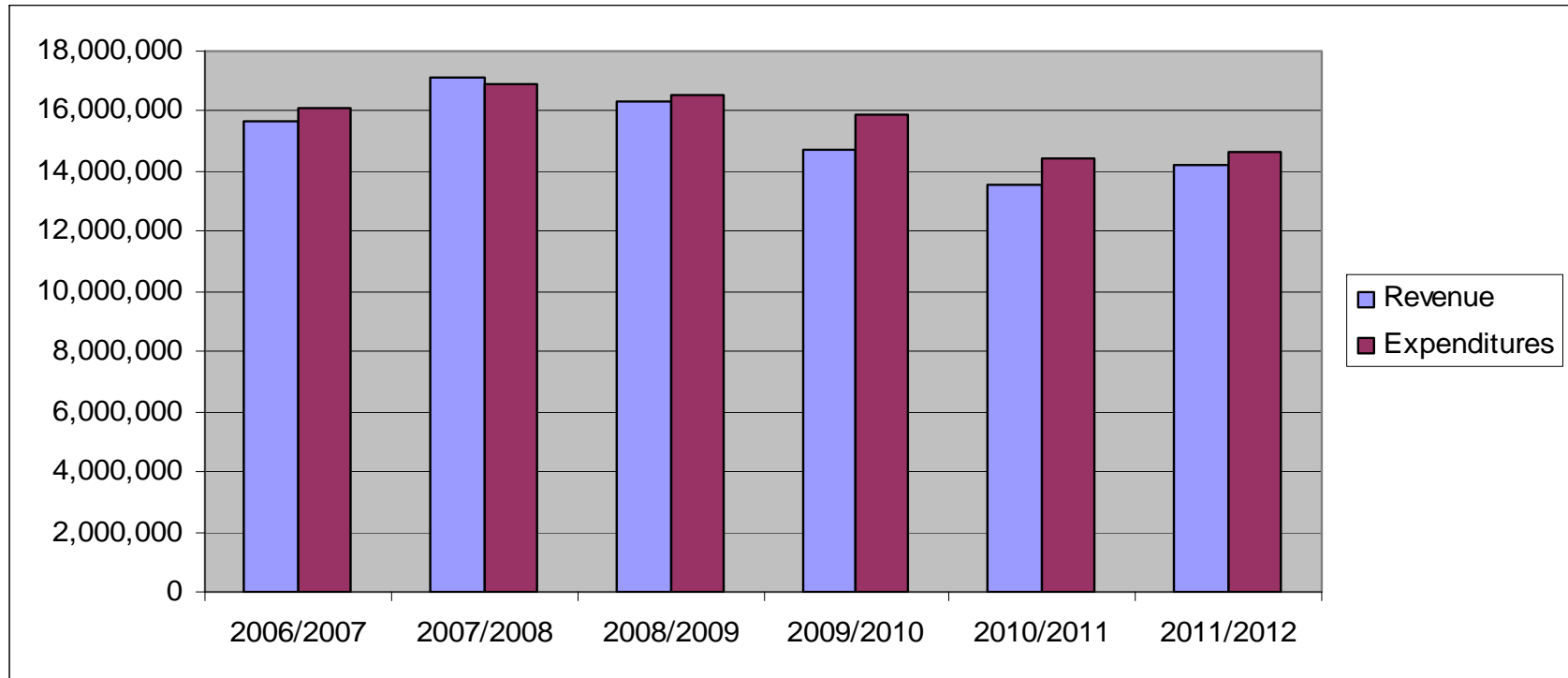
Staffing - *“The ultimate measure of a man is not where he stands in moments of comfort and convenience, but where he stands at times of challenge and controversy.” - Martin Luther King, Jr.*



School Year	Certificated	Classified	Management
2002/2003	51	60	15
2003/2004	69	61	14.5
2004/2005	72	60	14
2005/2006	107	67.5	18.5
2006/2007	103	71.5	24.5
2007/2008	104	74	23
2008/2009	100	72	20.5
2009/2010	93	74	20
2010/2011	85	70	17

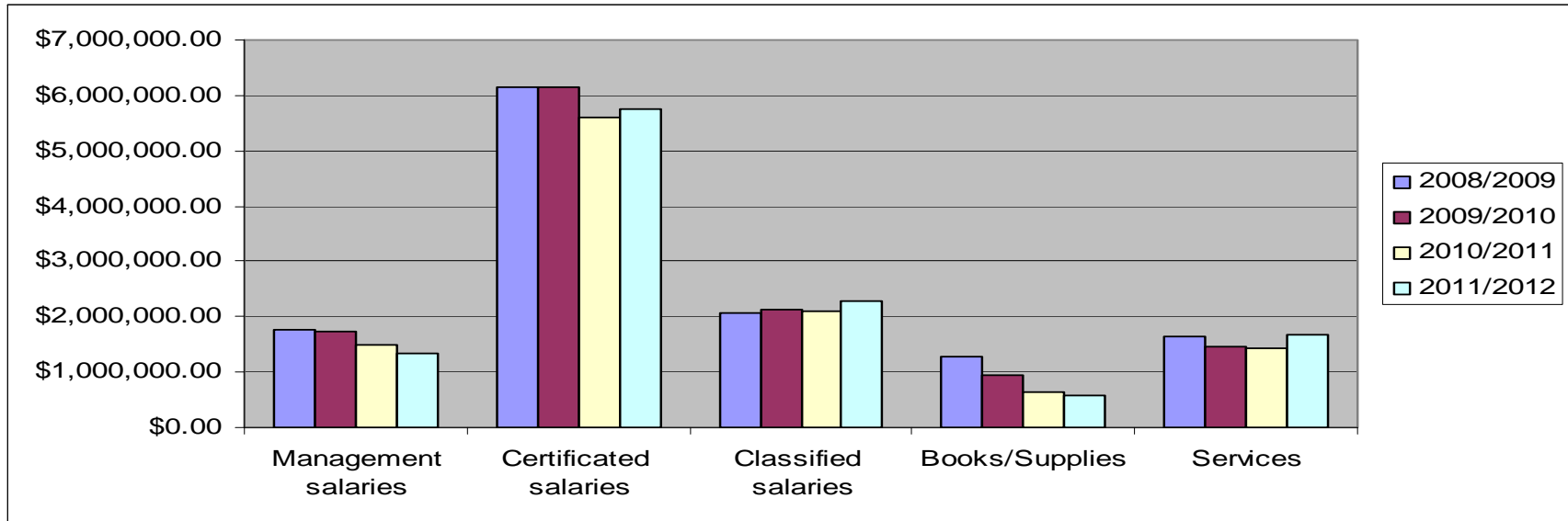
Budget

(at June adopted budgets – Restricted and Unrestricted)



	2006/2007	2007/2008	2008/2009	2009/2010	2010/2011	2011/2012
Revenue	15,652,634	17,129,804	16,355,632	14,689,124	13,535,220	14,221,966
Expenditures	16,073,225	16,941,303	16,535,810	15,921,643	14,464,900	14,645,137

Budget Reductions - “We cannot direct the wind, but we can adjust the sails.” - *Bertha Calloway*



	2008/2009	2009/2010	2010/2011	2011/2012
Management salaries	\$1,775,547.00	\$1,724,512.00	\$1,491,165.00	\$1,327,958.00
Certificated salaries	\$6,138,284.00	\$6,136,857.00	\$5,613,208.00	\$5,737,784.00
Classified salaries	\$2,067,186.00	\$2,132,677.00	\$2,089,040.00	\$2,274,012.00
Books/Supplies	\$1,274,013.00	\$932,662.00	\$632,912.00	\$586,775.00
Services	\$1,649,205.00	\$1,468,790.00	\$1,433,786.00	\$1,683,028.00

Multi-Year Budget Recap as June Adopted Budgets

	2009/2010	2010/2011	2011/2012	2012/2013	2013/2014
Beg. Budget	1,997,872	1,555,033	2,271,000	1,847,830	989,428
Revenue	14,689,124	13,535,220	14,221,966	14,544,090	14,795,817
Expenditures	15,921,643	14,464,900	14,645,137	15,402,492	15,276,223
Ending Balance	765,353	625,353	1,847,829	989,428	509,022
Reserve	3.5%	3.9%	12.4%	6.4%	3.3%

Multi-Year Projection 

Multi-Year Budget Recap as of 2010-11 UnAudited Actuals

	2010/11 UA's	2011/12 Budget	2012/13 MYP	2013/14 MYP
Beg. Budget	2,351,642	3,007,988*	2,584,816	1,726,414
Revenue	15,404,090	14,221,965	14,544,090	14,795,817
Expenditures	14,394,568	14,645,137	15,402,492	16,126,223
Ending Balance	3,007,988*	2,584,816	1,726,414	496,008**
Reserve	20%	17.6%	11.8%	3.4%

Bond Update

MEASURE G

- Passed: 1999 for \$30 million
- Facility Projects: Purchased land and constructed Phase I of Liberty High School which opened in August 2002. Modernized Webster Elementary School and constructed an Interim School Facility.
- Remaining bond funds = 0

MEASURE S

- Passed: 2006 for \$70 million
 - Facility Projects: Construct Ranchos Middle School, LHS Stadium and Science Classroom wing and Phase I of Modernization of Sierra View Elementary.
 - Remaining Bond Funds from Measure S approx. \$52 million
 - Approximately \$300,000.00 available from current bond funds accessed.
-

“If you think you’re too small to make a difference, you haven’t been in bed with a mosquito.” - Anita Roddick

